



---

# GEORGIA LAKE PROJECT

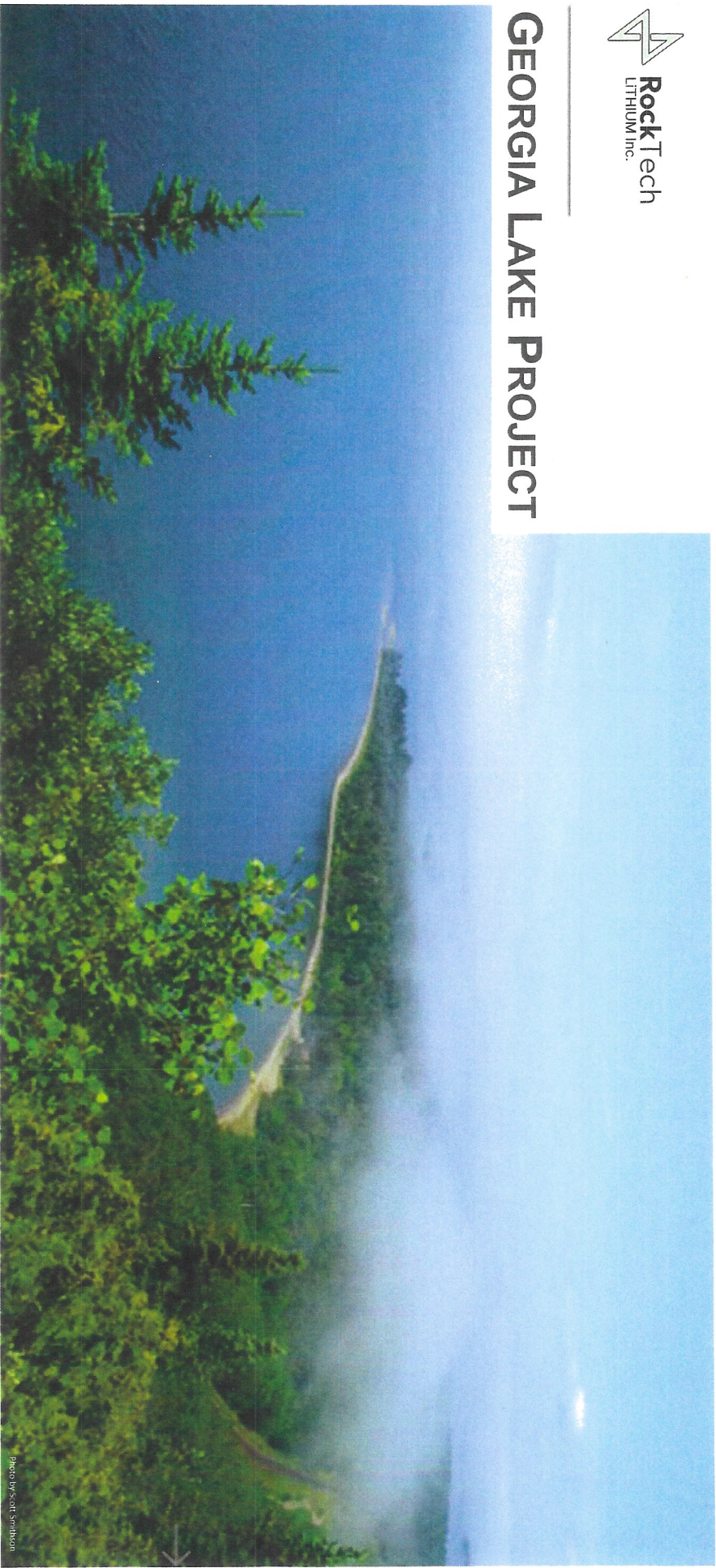


photo by Scott Simbion

# INTRODUCTION – ROCK TECH LITHIUM

- BUSINESS OBJECTIVE IS TO PROVIDE AN ALTERNATIVE SOURCE OF LITHIUM HYDROXIDE NECESSARY FOR THE PRODUCTION OF INDUSTRIAL BATTERIES DESTINED FOR THE AUTOMOBILE INDUSTRY.
- HOLDS 100% INTEREST IN GEORGIA LAKE PROJECT IN NORTHWESTERN ONTARIO.
- STRIVING TO DEVELOP AND OPERATE THROUGH ALL STAGES OF THE PROJECT
- ROCK TECH UNDERSTANDS THAT PROTECTING THE ENVIRONMENT IS THE HIGHEST PRIORITY. WE ARE COMMITTED TO BEING GOOD CUSTODIANS OF THE LAND AND WORKING WITH OUR FIRST NATIONS PARTNERS TO DEVELOP THE BEST PROJECT POSSIBLE.

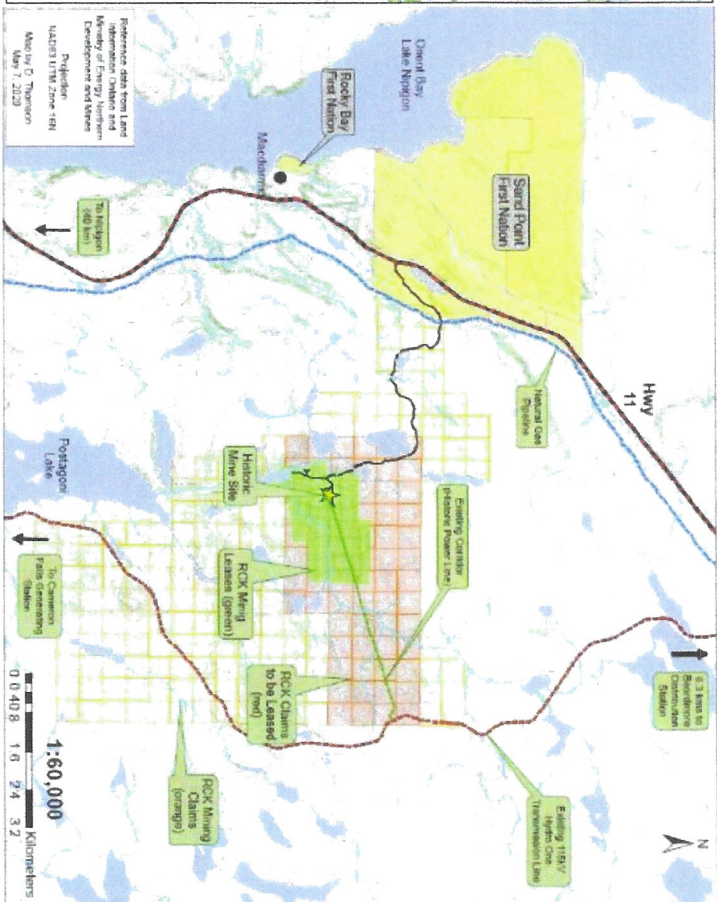
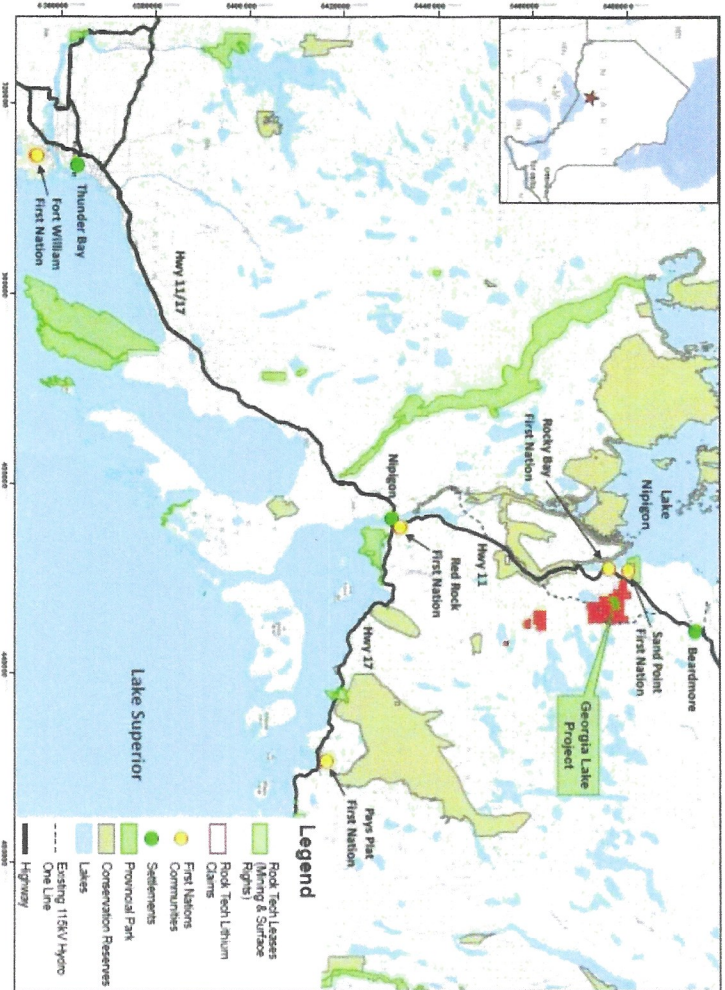


# ENVIRONMENTAL PRINCIPLES – BEING GOOD CUSTODIANS

- PROTECTION OF WATER IS IMPORTANT TO US  
ALL. ROCK TECH IS COMMITTED TO THE  
HIGHEST STANDARDS FOR WATER PROTECTION.
- ROCK TECH CONSIDERS MINING AN INTERIM  
LAND USE AND WILL MINIMIZE OUR FOOTPRINT  
AND PRACTICE PRUDENT USE OF OUR  
RESOURCES BEING MINDFUL OF LEAVING  
THINGS AS CLOSE AS PRACTICAL TO HOW WE  
FIND THEM.
- BE RESPECTFUL OF OUR NEIGHBOURS &  
PARTNERS.

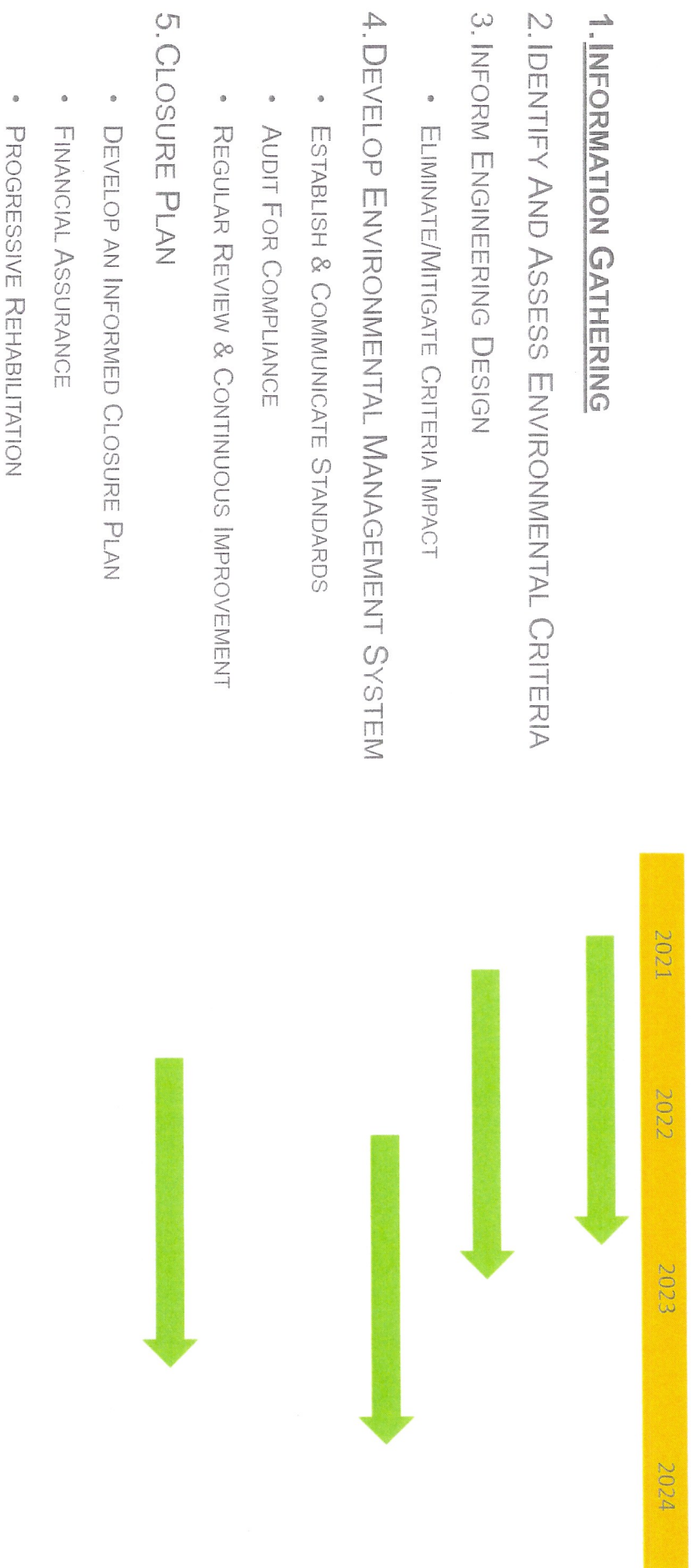


# GEORGIA LAKE PROJECT



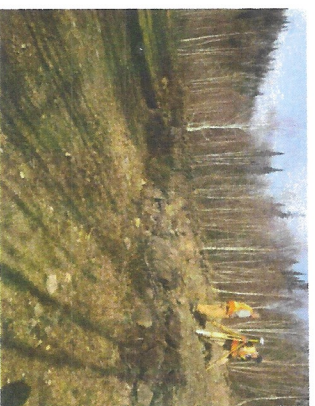
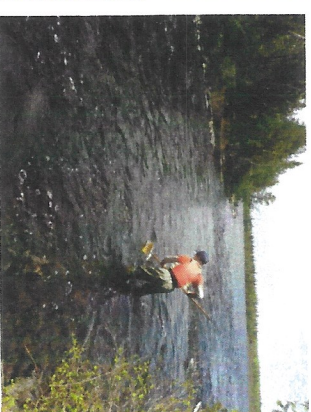
ROCK TECH LITHIUM INC. – JUNE 2021

# ENVIRONMENTAL FOCUS – PROJECT STATUS



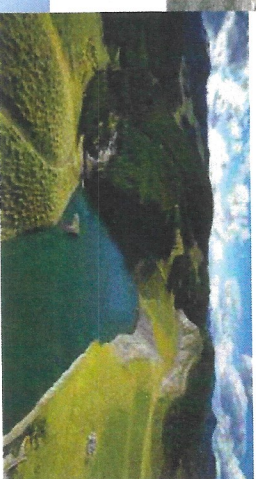
# COLLECTING DATA TO INFORM DECISIONS

- FIRST NATIONS
  - TRADITIONAL KNOWLEDGE & VALUES
  - INFORM, CONSULT & PARTICIPATE THROUGHOUT PROCESS
- GOVERNMENT AGENCIES
  - REGULATORY GUIDELINE & COMPLIANCE
- TECHNICAL STUDIES (2021)
  - SPECIES AT RISK VALUES
  - FISH HABITAT
  - GROUNDWATER STUDY & BASELINE WATER QUALITY
  - ARCHAEOLOGICAL ASSESSMENT
  - GEOCHEMICAL ASSESSMENT
  - GEOTECHNICAL ASSESSMENT



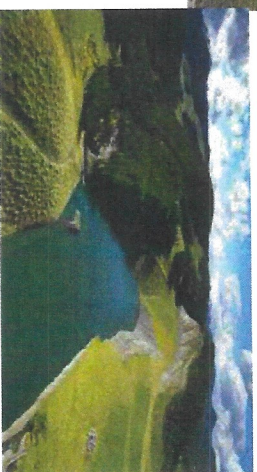
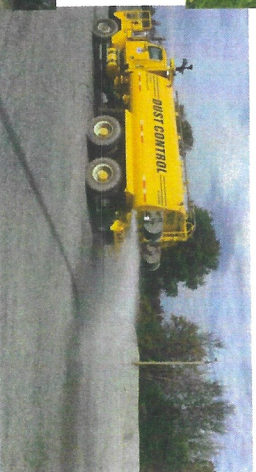
# PROJECT COMPONENTS

- CONCENTRATOR
  - CRUSHING, GRINDING, SPODUMENE CONCENTRATION
  - TAILINGS MANAGEMENT FACILITY
  - WATER RECYCLING
  - WATER TREATMENT
- OPEN PIT MINING
  - SEQUENTIALLY MINED FROM 5 ZONES
  - TRADITIONALLY MINED OPEN PITS
  - SEQUENCED BEFORE UNDERGROUND MINING
- UNDERGROUND MINING SEQUENTIALLY
  - RAMP ACCESS
  - CONVENTIONAL LONGHOLE MINING
  - ACCESS PROVIDED VIA PORTALS FROM WITHIN THE OPEN PITS



# PROJECT ENVIRONMENTAL MITIGATION MEASURES

- WATER PROTECTION EXAMPLES
  - DIVERT WATERFLOW AROUND SITE
  - MAXIMIZE WATER RECYCLING
  - WATER TREATMENT
  - CONTROLLED SEASONAL RELEASE OF TREATED WATER (QUALITY AND QUANTITY)
  - SPILL CONTAINMENT ON SITE
- DUST SUPPRESSION EXAMPLES
  - DUST COLLECTORS
  - DUST COVERS
  - DUST SUPPRESSION – WATER SPRAYS
  - PROGRESSIVE REHABILITATION – REVEGETATED BEFORE CLOSURE



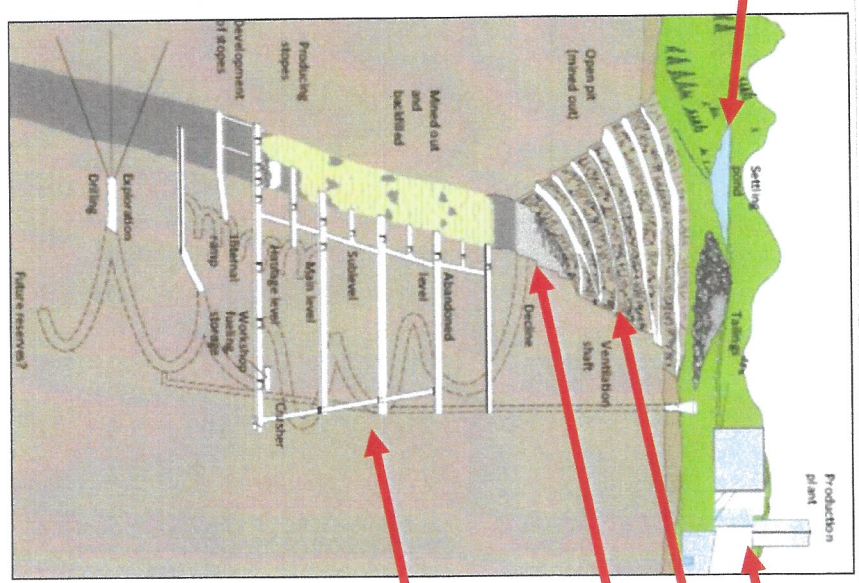


# CONCEPTUAL OPEN PIT – UNDERGROUND MINE

Tailings Management Facility & Water Reclaim

Approx. 75 metres

Approx. 225 metres



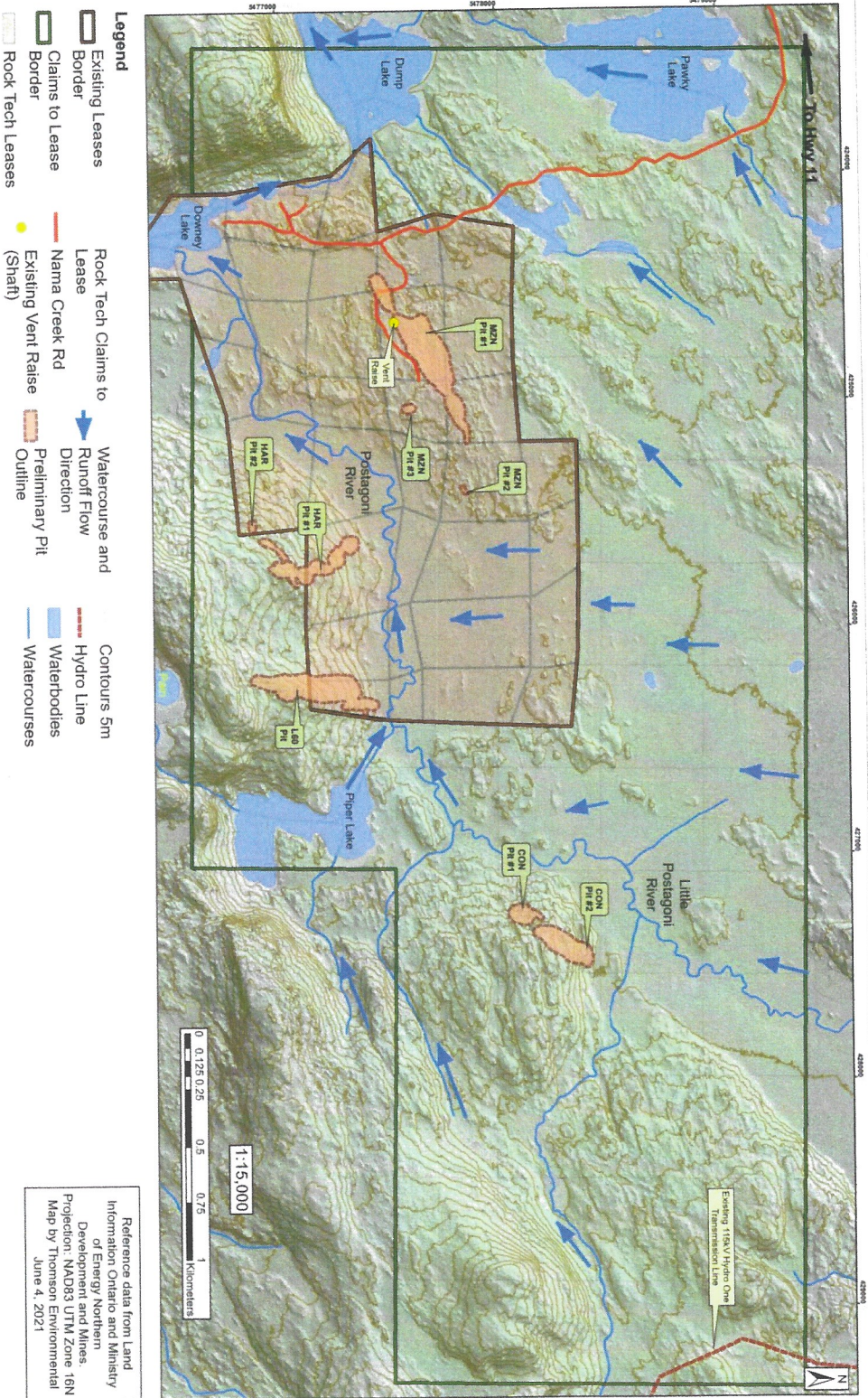
Concentrator

Open Pit

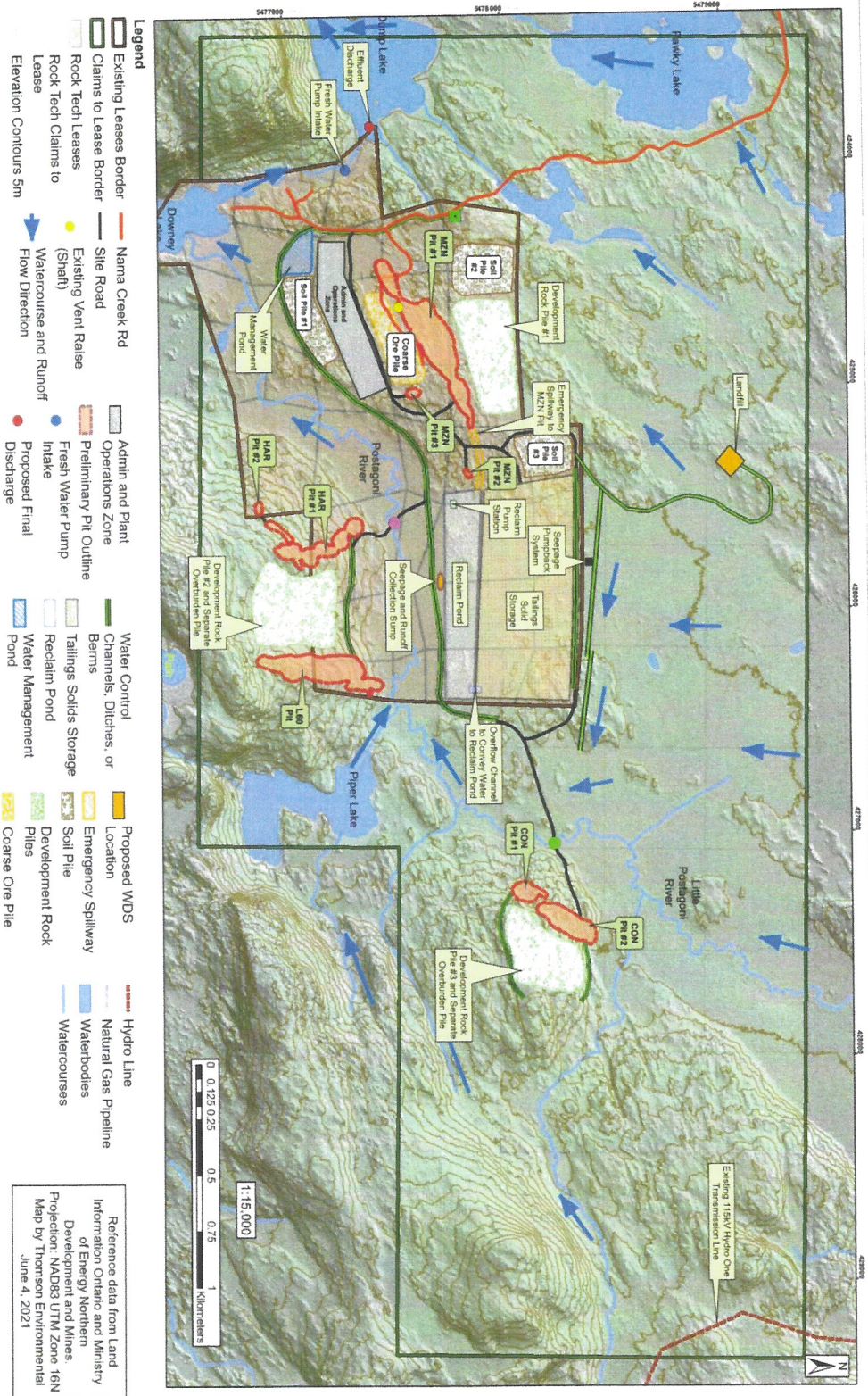
Portal

Underground Mine

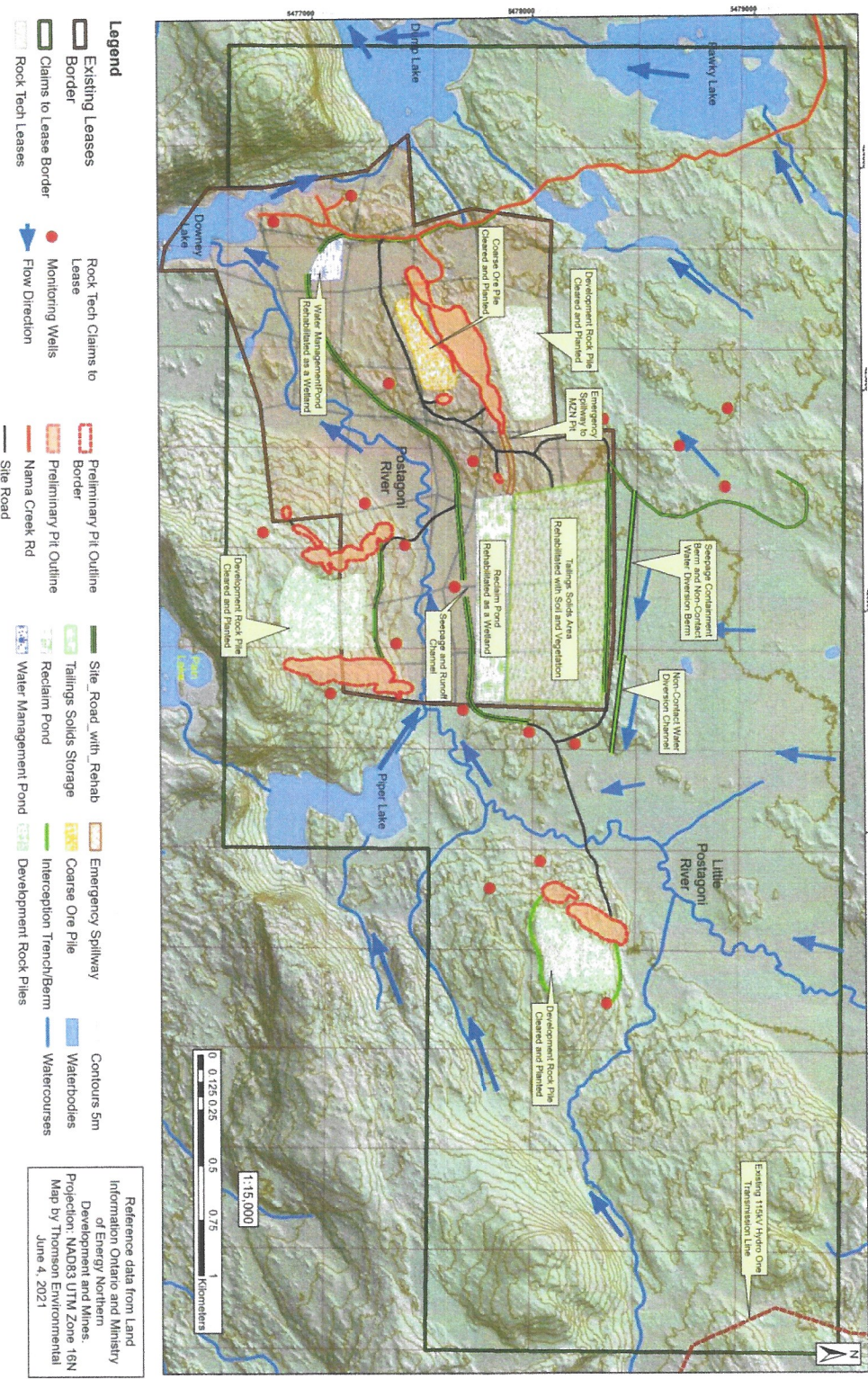
# WATERSHED, WATER FLOW, TOPOGRAPHY



# CONCEPTUAL PRODUCTION PHASE – PREFERRED OPTION



# CONCEPTUAL POST PRODUCTION PHASE



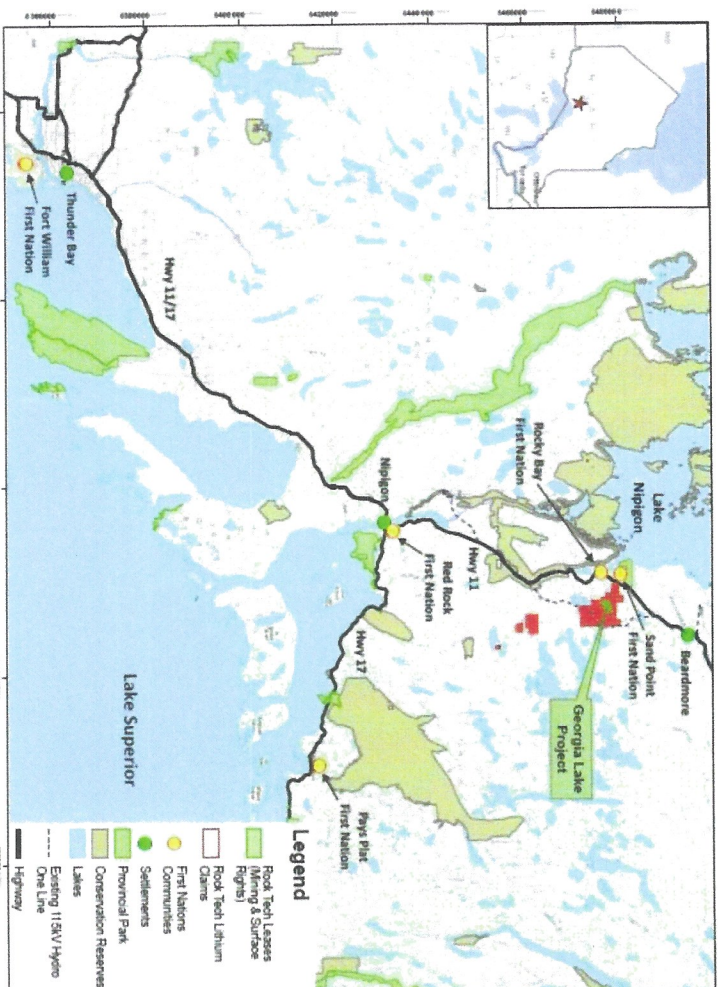
- Legend**
- Existing Leases
  - Rock Tech Claims to Lease
  - Claims to Lease Border
  - Rock Tech Leases
  - Preliminary Pit Outline
  - Nama Creek Rd
  - Site Road
  - Site Road with Rehab
  - Tailings Solids Storage
  - Reclaim Pond
  - Water Management Pond
  - Emergency Spillway
  - Coarse Ore Pile
  - Interception Trench/Berm
  - Development Rock Piles
  - Contours 5m
  - Waterbodies
  - Watercourses
  - Monitoring Wells
  - Flow Direction
  - Preliminary Pit Outline
  - Nama Creek Rd
  - Site Road
  - Site Road with Rehab
  - Tailings Solids Storage
  - Reclaim Pond
  - Water Management Pond
  - Emergency Spillway
  - Coarse Ore Pile
  - Interception Trench/Berm
  - Development Rock Piles
  - Contours 5m
  - Waterbodies
  - Watercourses

Reference data from Land Information Ontario and Ministry of Energy, Northern Development and Mines. Projection: NAD83 UTM Zone 16N Map by Thomson Environmental June 4, 2021



# WHAT DO WE HOPE TO ACCOMPLISH IN 2021?

- ENGAGEMENT
  - BUILDING RELATIONSHIPS
  - REGULAR COMMUNICATIONS
  - EXPLORATION AGREEMENT
  - EMPLOYMENT & BUSINESS OPPORTUNITIES
- ENGINEERING
  - COMPLETE PRE FEASIBILITY STUDY
  - MORE DETAILED DESIGN TO INFORM DECISIONS
- EXPLORATION
  - UPGRADE INFERRED RESOURCE TO INDICATED
  - POTENTIAL STERILIZATION DRILLING FOR INFRASTRUCTURE
- ENVIRONMENTAL BASELINE
  - CONDUCT ENVIRONMENTAL BASELINE SURVEYS
  - ENVIRONMENTAL MITIGATIONS IN ENGINEERING DESIGN



# QUESTIONS & COMMENTS



Miigwetchi! Thank you for requesting this meeting.

**Forward looking statements** This presentation may contain "forward-looking information" that is based on expectations, estimates and projections as of the date of the presentation. Information in this presentation has been furnished for your information only, is accurate at the time of posting, and may be superseded by more current information. Forward-looking information involves known and unknown risks, uncertainties and other factors which may cause the actual results, performance or achievements of the Company to be materially different from any future results, performance or achievements expressed or implied by the forward-looking information.

ROCK TECH LITHIUM INC. – JUNE 2021

